

# Technical Insulation

Thermaflex<sup>®</sup> Insulation Solution

---



## TECHNICAL INSULATIONS



### ThermaSmart® PRO

A sustainable solution for heating, sanitary, ventilation, air-conditioning and cooling systems

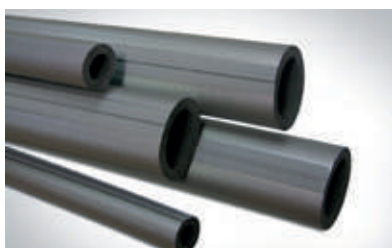
page 6



### ThermaEco

System of technical insulation for heating, sanitary, ventilation and air conditioning installations

page 13



### Ultra M

System of technical insulation for heating and sanitary, external surface laminated with knurled PE foil



### ThermaCompact

Technical insulation system for flush-mounted installation

page 19



### ThermaCompact TF

Acoustic insulation effectively suppressing noise emitted by installations



### PUR insulations

Technical insulation system made of semi-rigid polyurethane foam for heating systems



### Mineral wool insulations

Mineral wool tubes for thermal and acoustic insulation of heating pipelines and industrial systems



### Rubber insulations

Flexible technical insulation of rubber foam for cooling, air conditioning and ventilation systems



### Solar insulations

Technical insulations for solar systems



### Coats of ALU sheet

Coats of Alu sheet for protecting insulation against mechanical damage and weather conditions.

# CONTENTS

Product catalogue								
PRODUCT	INSTALLATION							PAGE
	flush	heating	sanitary	cooling	ventil.	air condit	solar	
<b>ThermaSmart® PRO</b>								<b>5</b>
ThermaSmart® PRO - tubes with partial incision		•	•					7
ThermaSmart® PRO - SA tubes		•	•					8
ThermaSmart® PRO - tubes without incision				•	•	•		9
ThermaSmart® PRO - sheets		•		•	•	•		10
ThermaSmart® PRO - elbows, T-pieces		•	•	•	•	•		11-12
ThermaSmart® PRO - mounting accessories								13
<b>ThermaEco</b>								<b>15</b>
ThermaEco FRZ – tubes		•	•		•	•		17-18
ThermaEco FRZ – sheets		•	•		•	•		19
ThermaEco – elbows, T-pieces		•	•		•	•		20
ThermaEco ZZ – tubes		•	•					21
ThermaEco – mounting accessories								22
<b>Ultra M</b>								<b>23</b>
Ultra M – tubes		•	•					25
Ultra M – mounting accessories								26
<b>ThermaCompact</b>								<b>27</b>
ThermaCompact IS – tubes	•							29
ThermaCompact IS10 – tubes	•							30
ThermaCompact – mounting accessories	•							30
ThermaSmart ENEV-Q – tubes	•							32
ThermaSmart ENEV-Q – mounting acc.								32
<b>ThermaCompact TF</b>								<b>33</b>
ThermaCompact TF – tubes			•					35
ThermaCompact TF – mounting acc.								36
<b>PUR Insulations</b>								<b>37</b>
PUR insulations – tubes		• +135°C						39, 42
PUR insulations – elbows		• +135°C						40-42
PUR insulations – mounting accessories								43
<b>Mineral wool insulations</b>								<b>45</b>
Mineral wool insulation – tubes		•						47-48
<b>Rubber insulations</b>								<b>49</b>
Rubber insulations – tubes				•	•	•		51-53
Rubber insulations – sheets				•	•	•		53
Rubber insulations – mounting acc.								54

PRODUCT	INSTALLATION							PAGE
	flush	heating	sanitary	cooling	ventil.	air condit	solar	
<b>Solar insulations</b>								<b>55</b>
EPDM Solar insulations – tubes		• +175°C					•	57
EPDM Solar insulations – sheets		•					•	58
EPDM Solar insulations – mounting acc.								58
<b>Special coatings</b>								<b>59</b>
Special coatings		•	•	•	•	•	•	61
<b>Coats of ALU sheet</b>								<b>63</b>
Coats of ALU sheet		•	•	•	•	•		65-67
<b>Heating cables</b>								<b>69</b>
ThermaLint			•	•		•		71
ThermaLint Tracing			•	•		•		71
Heating cables			•	•		•		73-74
<b>SpecialFoam</b>								<b>75</b>
ThermaRod								77
ProFoam								78-79
<b>Technical information</b>								
Minimal permissible thicknesses of insulation materials								82
Table: Selection of insulation sheet thicknesses, ThermaEco FRZ, ThermaSmart® PRO								82
Table: Cable size selection								83
General Sales Terms and Conditions (GTC)								84-85

## DEFINITION OF AVAILABILITY

Estimated delivery times for products:

A – delivery up to 1 week\*

B – delivery from 1 to 3 weeks

C – delivery time will be confirmed individually for the selected assortment

\* Lead time included transport to customer location for orders placed before 12:00.  
For orders placed after 12:00, extra 1 day should be added.

# ThermaSmart<sup>®</sup> PRO

Technical insulation with B fire class

Fully recyclable complete insulation solution made of direct extruded, closed-cell high quality polyolefin foam



## Benefits

- Safety - Excellent fire and smoke behavior
- Condensation free system for life-time installed by qualified insulator
- Consistent performance - Damage free, robust insulation material
- Gain point for Green building program - Cradle to Cradle Certified™ Bronze, EPD, RoHS

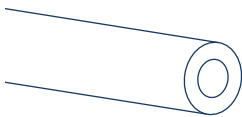
## Applications

- All HVAC-R systems: Heating, Ventilation, Air conditioning and Cooling (for ThermaSmart PRO tubes & sheets)
- Sanitary and heating systems (for ThermaSmart PRO - tubes with partial incision and ThermaSmart PRO SA - self-adhesive tubes)

### Types of products

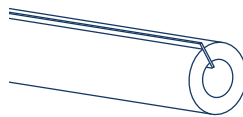
#### ThermaSmart<sup>®</sup> PRO - Tube

Insulation tube made of high quality polyolefin foam, with or without partial incision



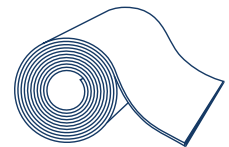
#### ThermaSmart<sup>®</sup> PRO SA - Self-adhesive tube

Self-adhesive Insulation tube with a slit covered on both sides with a layer of glue



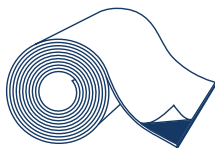
#### ThermaSmart<sup>®</sup> PRO - Sheet

Insulation sheet in rolls



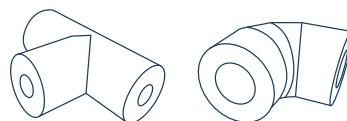
#### ThermaSmart<sup>®</sup> PRO SA - sheet

Self-adhesive insulation sheet in rolls



#### ThermaSmart<sup>®</sup> PRO - Prefabricated parts

Ready fittings for professional and quick assembly





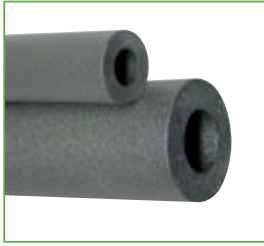
# Technical Properties

Properties	Units SI	Values	Testing method
<b>Physical properties</b>			
Dimensional tolerances	-	Coherent	EN 14313
Density	kg/m <sup>3</sup>	18 - 40	-
Structure	-	Fine, closed-cells	-
Color	-	Anthracite	-
<b>Thermal properties</b>			
Service temperature range	°C	-80 to +95	EN 14707
Maximum service temperature	°C	+95	-
Thermal conductivity (λ)	W/m·K	0.035 at 10°C 0.038 at 40°C	EN ISO 8497
<b>Fire properties</b>			
SBI classification	-	B <sub>L</sub> - s1, d0 (tubes) B - s2, d0 (sheets)	EN 13501-1
British standard	-	Class 1	BS 476 Part 7
British standard	-	Class 0	BS 476 Part 6
Flammability standard	-	HF-1	UL94
<b>Water resistance properties</b>			
Water vapor diffusion	μ	≥ 10.000 (standard tubes, not for self-adhesive tubes) ≥ 5.300 (sheets)	EN 13469
Water absorption	kg/m <sup>2</sup>	0.01 (tubes) 0.05 (sheets)	EN 13472 EN 1609

Current authorizations, approvals, test results, technical test reports are available at [www.thermaflex.com](http://www.thermaflex.com)

## ThermaSmart® PRO - tubes with partial incision

Tubes of high quality polyolefin foam, grey. For sanitary and heating application



Packed into 40 x 60 x 205 cm cartons

Pipe diameter					Wall thickness E = 9 mm					Wall thickness J = 13 mm				
Cu		Fe			Product code	Description	Price/rm	Rm/cart.	Availability	Product code	Description	Price/rm	Rm/cart.	Availability
DN	outer (mm)	inch	DN	outer (mm)										
10	12,0	½	6	10,2						3000-013012-020	J-12		260	C
10	15,0	¼	8	13,5	3000-009015-020	E-15		348	C	3000-013015-020	J-15		240	B
15	18,0	⅜	10	17,2	3000-009018-020	E-18		288	A	3000-013018-020	J-18		200	A
20	22,0	½	15	21,3	3000-009022-020	E-22		248	A	3000-013022-020	J-22		172	A
25	28,0	¾	20	26,9	3000-009028-020	E-28		188	A	3000-013028-020	J-28		134	A
32	35,0	1	25	33,7	3000-009035-020	E-35		140	A	3000-013035-020	J-35		108	A
40	42,0	1 ¼	32	42,4	3000-009042-020	E-42		110	A	3000-013042-020	J-42		90	B
	48,0	1 ½	40	48,3	3000-009048-020	E-48		84	C	3000-013048-020	J-48		70	B
50	54,0			54,0	3000-009054-020	E-54		76	B	3000-013054-020	J-54		64	A
50	57,0			57,0	3000-009057-020	E-57		76	C	3000-013057-020	J-57		58	C
		2	50	60,0	3000-009060-020	E-60		70	B	3000-013060-020	J-60		58	A
	64,0			63,5	3000-009063-020	E-63		68	C	3000-013063-020	J-63		52	B
	70,0	2 ¼		70,0						3000-013070-020	J-70		44	B
65	76,1	2 ½	65	76,1	3000-009076-020	E-76		46	B	3000-013076-020	J-76		40	A
80	88,9	3	80	88,9						3000-013089-020	J-89		32	A
		3 ½		101,6						3000-013102-020	J-102		26	C
100	108,0	3 ¾	100	108,0						3000-013108-020	J-108		24	B
100	114,0	4	100	114,3						3000-013114-020	J-114		22	A

Pipe diameter					Wall thickness N = 20 mm					Wall thickness P = 25 mm					Wall thickness S = 30 mm				
Cu		Fe			Product code	Description	Price/rm	Rm/cart.	Availability	Product code	Description	Price/rm	Rm/cart.	Availability	Product code	Description	Price/rm	Rm/cart.	Availability
DN	outer (mm)	inch	DN	outer (mm)															
10	15,0	¼	8	13,5	3000-020015-020	N-15		130	B	3000-025015-020	P-15		90	B					
15	18,0	⅜	10	17,2	3000-020018-020	N-18		118	A	3000-025018-020	P-18		90	C					
20	22,0	½	15	21,3	3000-020022-020	N-22		100	A	3000-025022-020	P-22		72	B	3000-030022-020	S-22		60	B
25	28,0	¾	20	26,9	3000-020028-020	N-28		90	A	3000-025028-020	P-28		66	C	3000-030028-020	S-28		58	B
32	35,0	1	25	33,7	3000-020035-020	N-35		66	A	3000-025035-020	P-35		54	C	3000-030035-020	S-35		46	A
40	42,0	1 ¼	32	42,4	3000-020042-020	N-42		62	A	3000-025042-020	P-42		46	B	3000-030042-020	S-42		40	A
	48,0	1 ½	40	48,3	3000-020048-020	N-48		48	B	3000-025048-020	P-48		42	C	3000-030048-020	S-48		34	C
50	54,0			54,0	3000-020054-020	N-54		46	B	3000-025054-020	P-54		38	C	3000-030054-020	S-54		28	A
50	57,0			57,0	3000-020057-020	N-57		40	C	3000-025057-020	P-57		36	C					
		2	50	60,0	3000-020060-020	N-60		40	B	3000-025060-020	P-60		34	C	3000-030060-020	S-60		26	B
	64,0			63,5	3000-020063-020	N-63		40	C	3000-025063-020	P-63		32	B	3000-030063-020	S-63		24	B
	70,0	2 ¼		70,0	3000-020070-020	N-70		34	C	3000-025070-020	P-70		28	C					
65	76,1	2 ½	65	76,1	3000-020076-020	N-76		28	B	3000-025076-020	P-76		26	B	3000-030076-020	S-76		20	A
80	88,9	3	80	88,9	3000-020089-020	N-89		24	B	3000-025089-020	P-89		20	C	3000-030089-020	S-89		18	B
		3 ½		101,6	3000-020102-020	N-102		20	C	3000-025102-020	P-102		18	C					
100	108,0	3 ¾	100	108,0	3000-020108-020	N-108		18	C	3000-025108-020	P-108		16	C					
100	114,0	4	100	114,3	3000-020114-020	N-114		18	B	3000-025114-020	P-114		14	B	3000-030114-020	S-114		10	C

Definition of availability - see page 4





### ThermaSmart® PRO - self-adhesive tubes

Tubes with a slit on both edges with glue. For sanitary and heating application

Pipe diameter					Wall thickness E = 9 mm					Wall thickness J = 13 mm					Wall thickness N = 20 mm				
Cu		Fe			Product code	Description	Price/rm	Rm/cart.	Availability	Product code	Description	Price/rm	Rm/cart.	Availability	Product code	Description	Price/rm	Rm/cart.	Availability
DN	outer (mm)	inch	DN	outer (mm)															
10	12,0	½	6	10,2	3000-009012-010	E-12		360	C	3000-013012-010	J-12		260	C					
10	15,0	¼	8	13,5	3000-009015-010	E-15		348	C	3000-013015-010	J-15		240	C	3000-020015-010	N-15		130	C
15	18,0	¾	10	17,2	3000-009018-010	E-18		288	C	3000-013018-010	J-18		200	C	3000-020018-010	N-18		118	C
20	22,0	½	15	21,3	3000-009022-010	E-22		248	C	3000-013022-010	J-22		172	C	3000-020022-010	N-22		100	C
25	28,0	¾	20	26,9	3000-009028-010	E-28		188	C	3000-013028-010	J-28		134	C	3000-020028-010	N-28		90	C
32	35,0	1	25	33,7	3000-009035-010	E-35		140	C	3000-013035-010	J-35		108	C	3000-020035-010	N-35		66	C
40	42,0	1 ¼	32	42,4	3000-009042-010	E-42		110	C	3000-013042-010	J-42		90	C	3000-020042-010	N-42		62	C
	48,0	1 ½	40	48,3	3000-009048-010	E-48		84	C	3000-013048-010	J-48		70	C	3000-020048-010	N-48		48	C
50	54,0			54,0	3000-009054-010	E-54		76	C	3000-013054-010	J-54		64	C	3000-020054-010	N-54		46	C
50	57,0			57,0						3000-013057-010	J-57		58	C					
		2	50	60,0						3000-013060-010	J-60		58	C	3000-020060-010	N-60		40	C

packed into 40 x 60 x 205 cm cartons

### ThermaSmart® PRO - tubes (products dedicated for protection of PP an PP-R pipes)

Tubes of high quality polyolefin foam, grey



packed into 40 x 60x 205 cm cartons

Pipe diameter		Wall thickness E = 9 mm					Wall thickness J = 13 mm				
Nominal dimension Dn/OD	Product code	Description	Price/rm	Rm/cart.	Availability	Product code	Description	Price/rm	Rm/cart.	Availability	
16	3000-009015-020	E-15-16		348	A	3000-013015-020	J-15-16		240	A	
20	3000-009020-020	E-20		248	C	3000-013020-020	J-20		180	C	
25	3000-009025-020	E-25-27		200	C	3000-013025-020	J-25-27		152	A	
32	3000-009032-020	E-32		140	C	3000-013032-020	J-32		116	C	
40	3000-009040-020	E-40		110	C	3000-013040-020	J-40		94	A	
50	3000-009050-020	E-50-51		80	C	3000-013050-020	J-50-51		70	C	
63	3000-009063-020	E-63-64		68	C	3000-013063-020	J-63-64		52	A	
75	3000-009076-020	E-75-76		46	B	3000-013076-020	J-75-76		40	A	
90						3000-013089-020	J-89-90		32	A	
110						3000-013108-020	J-108-110		24	A	

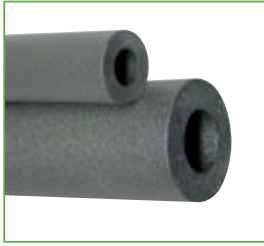
Pipe diameter		Wall thickness N = 20 mm					Wall thickness P = 25 mm					Wall thickness S = 30 mm				
Nominal dimension Dn/OD	Product code	Description	Price/rm	Rm/cart.	Availability	Product code	Description	Price/rm	Rm/cart.	Availability	Product code	Description	Price/rm	Rm/cart.	Availability	
16	3000-020015-020	N-15-16		130	B	3000-025015-020	P-15-16		90	A	3000-030015-020	S-15-16		70	C	
20	3000-020020-020	N-20		108	C	3000-025020-020	P-20		76	C	3000-030020-020	S-20*		62	C	
25	3000-020025-020	N-25-27		94	A	3000-025025-020	P-25-27		70	A	3000-030025-020	S-25-27*		58	A	
32	3000-020032-020	N-32		68	C	3000-025032-020	P-32		56	C	3000-030032-020	S-32		46	A	
40	3000-020040-020	N-40		64	A	3000-025040-020	P-40		48	A	3000-030040-020	S-40		42	A	
50	3000-020050-020	N-50-51		48	C	3000-025050-020	P-50-51		40	A	3000-030050-020	S-50*		34	A	
63	3000-020063-020	N-63-64		40	B	3000-025063-020	P-63-64		32	A	3000-030063-020	S-63-64		24	A	
75	3000-020076-020	N-75-76		28	B	3000-025076-020	P-75-76		26	A	3000-030076-020	S-75-76		20	B	
90	3000-020089-020	N-89-90		24	A	3000-025089-020	P-89-90		20	A	3000-030089-020	S-89-90		18	B	
110	3000-020108-020	N-108-110		18	B	3000-025108-020	P-108-110		16	C	3000-030108-020	S-108-110		12	C	

Definition of availability - see page 4

\*product for individual orders

## ThermaSmart® PRO - tubes without an incision

Tubes of high quality polyolefin foam, grey. Without an incision. For refrigeration application



packed into 40 x 60x 205 cm cartons

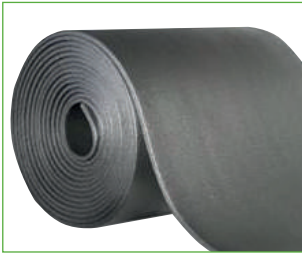
Pipe diameter					Wall thickness E = 9 mm					Wall thickness J = 13 mm				
Cu		Fe			Product code	Description	Price/rm	Rm/cart.	Availability	Product code	Description	Price/rm	Rm/cart.	Availability
DN	outer (mm)	inch	DN	outer (mm)										
10	12,0	½	6	10,2						3000-013012-000	J-12		260	B
10	15,0	¼	8	13,5	3000-009015-000	E-15		348	C	3000-013015-000	J-15		240	A
15	18,0	⅜	10	17,2	3000-009018-000	E-18		288	C	3000-013018-000	J-18		200	A
20	22,0	½	15	21,3	3000-009022-000	E-22		248	A	3000-013022-000	J-22		172	A
25	28,0	¾	20	26,9	3000-009028-000	E-28		188	B	3000-013028-000	J-28		134	A
32	35,0	1	25	33,7	3000-009035-000	E-35		140	A	3000-013035-000	J-35		108	A
40	42,0	1 ¼	32	42,4	3000-009042-000	E-42		110	B	3000-013042-000	J-42		90	B
	48,0	1 ½	40	48,3	3000-009048-000	E-48		84	B	3000-013048-000	J-48		70	B
50	54,0			54,0	3000-009054-000	E-54		76	C	3000-013054-000	J-54		64	A
50	57,0			57,0	3000-009057-000	E-57		76	C	3000-013057-000	J-57		58	C
		2	50	60,0	3000-009060-000	E-60		70	B	3000-013060-000	J-60		58	A
	64,0			63,5	3000-009063-000	E-63		68	C	3000-013063-000	J-63		52	B
	70,0	2 ¼		70,0						3000-013070-000	J-70		44	B
65	76,1	2 ½	65	76,1	3000-009076-000	E-76		46	B	3000-013076-000	J-76		40	A
80	88,9	3	80	88,9						3000-013089-000	J-89		32	A
		3 ½		101,6						3000-013102-000	J-102		26	B
100	108,0	3 ¾	100	108,0						3000-013108-000	J-108		24	A
100	114,0	4	100	114,3						3000-013114-000	J-114		22	A

Pipe diameter					Wall thickness N = 19 mm					Wall thickness P = 25 mm					Wall thickness S = 30 mm				
Cu		Fe			Product code	Description	Price/rm	Rm/cart.	Availability	Product code	Description	Price/rm	Rm/cart.	Availability	Product code	Description	Price/rm	Rm/cart.	Availability
DN	outer (mm)	inch	DN	outer (mm)															
10	15,0	¼	8	13,5	3000-019015-000	N-15		130	A	3000-025015-000	P-15		90	A					
15	18,0	⅜	10	17,2	3000-019018-000	N-18		118	A	3000-025018-000	P-18		90	B					
20	22,0	½	15	21,3	3000-019022-000	N-22		100	A	3000-025022-000	P-22		72	A	3000-030022-000	S-22		60	C
25	28,0	¾	20	26,9	3000-019028-000	N-28		90	A	3000-025028-000	P-28		66	A	3000-030028-000	S-28		58	C
32	35,0	1	25	33,7	3000-019035-000	N-35		66	A	3000-025035-000	P-35		54	A	3000-030035-000	S-35		46	C
40	42,0	1 ¼	32	42,4	3000-019042-000	N-42		62	A	3000-025042-000	P-42		46	A	3000-030042-000	S-42		40	C
	48,0	1 ½	40	48,3	3000-019048-000	N-48		48	A	3000-025048-000	P-48		42	A	3000-030048-000	S-48		34	C
50	54,0			54,0	3000-019054-000	N-54		46	A	3000-025054-000	P-54		38	A	3000-030054-000	S-54		28	C
50	57,0			57,0	3000-019057-000	N-57		40	C	3000-025057-000	P-57		36	C					
			50	60,0	3000-019060-000	N-60		40	B	3000-025060-000	P-60		34	A	3000-030060-000	S-60		26	C
	64,0	2		63,5	3000-019063-000	N-63		40	C	3000-025063-000	P-63		32	A	3000-030063-000	S-63		24	C
	70,0			70,0	3000-019070-000	N-70		34	C	3000-025070-000	P-70		28	B					
65	76,1	2 ¼	65	76,1	3000-019076-000	N-76		28	B	3000-025076-000	P-76		26	A	3000-030076-000	S-76		20	B
80	88,9	2 ½	80	88,9	3000-019089-000	N-89		24	A	3000-025089-000	P-89		20	A	3000-030089-000	S-89		18	B
		3		101,6	3000-019102-000	N-102		20	B	3000-025102-000	P-102		18	B					
100	108,0	3 ½	100	108,0	3000-019108-000	N-108		18	C	3000-025108-000	P-108		16	B					
100	114,0	3 ¾	100	114,3	3000-019114-000	N-114		18	A	3000-025114-000	P-114		14	A	3000-030114-000	S-114		10	B

Definition of availability - see page 4

## ThermaSmart® PRO - sheets

Insulating sheets of high quality polyolefin foam; grey; in rolls. Roll width: 100 cm



### ThermaSmart PRO – sheets in long rolls

Product code	Thickness	Price/m <sup>2</sup>	m <sup>2</sup> /roll	Availability
3200-010100-004	10 mm		104	B
3200-013100-004	13 mm		78	B
3200-019100-004	19 mm		52	B
3200-025100-004	25 mm		39	B



### ThermaSmart PRO – sheets in short rolls

Product code	Thickness	Price/m <sup>2</sup>	m <sup>2</sup> /roll	Availability
3200-010100-204	10 mm		10	B
3200-013100-204	13 mm		8	B
3200-019100-204	19 mm		6	B
3200-025100-204	25 mm		4	B

## ThermaSmart® PRO SA - self-adhesive sheets

Self-adhesive insulating sheets of high quality polyolefin foam; grey; in rolls. Roll width: 100 cm



### ThermaSmart PRO SA – sheets in long rolls

Product code	Thickness	Price/m <sup>2</sup>	m <sup>2</sup> /roll	Availability
3200-010100-104	10	on request	104	on request
3200-013100-104	13	on request	78	on request
3200-019100-104	19	on request	52	on request
3200-025100-104	25	on request	39	on request



### ThermaSmart PRO SA – sheets in short rolls

Product code	Thickness	Price/m <sup>2</sup>	m <sup>2</sup> /roll	Availability
3200-010100-304	10	on request	10	on request
3200-013100-304	13	on request	8	on request
3200-019100-304	19	on request	6	on request
3200-025100-304	25	on request	4	on request

## ThermaSmart® PRO - mounting accessories

Accessories						
Product	Product code	Product description	Minimum order	Pcs/pack.	Unit price	Availability
	3702-050015-100	ThermaTape TS PRO 2mm x 50mm x 15m	piece	10		A
	3700-000250-000	Thermaglu glue (0,25 L)	piece	24		A
	3700-001000-000	Thermaglu glue (1 L)	piece	12		A
	3700-020000-000	Thermaglu glue 20 L (16,8 kg)	piece	1		A
	3702-001000-110	White waterproof UV paint (1L)	box	12		B
	3799-001000-000	Solvent (1 L)	box	12		B
	3801-000000-000	Glue pump	piece	1		A
	3801-000011-110	Glue brush 11 mm	piece	1		A
	3801-000017-120	Glue brush 17 mm	piece	1		A
	3800-000000-500	Metri box – inner width: 12 cm	piece	1		A
	3800-000000-000	Tool set	piece	1		A
	3802-000250-100	Knife	piece	1		A

Definition of availability - see page 4

# ThermaEco

Fully recyclable complete thermal insulation solution made of direct extruded, closed-cell high quality polyethylene foam



## Benefits

- Universal in application
- Wide product range and prefabrication
- Consistent performance - Damage free, robust insulation material
- Quick and easy assembly

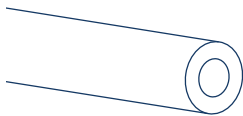
## Applications

- Domestic heating and plumbing – energy conservation (central heating, hot and cold water) ventilation ducts

### Types of products

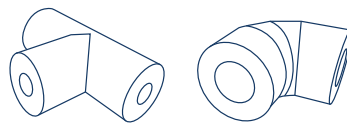
#### ThermaEco FRZ - Tube

Insulation tube made of high quality polyethylene foam, with longitudinal cut



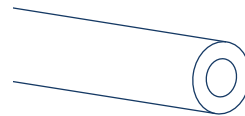
#### ThermaEco FRZ - Prefabricated parts

Ready fittings for professional and quick assembly



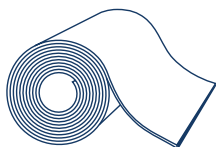
#### ThermaEco ZZ - Tube

Insulation tube made of polyethylene foam, with longitudinal cut



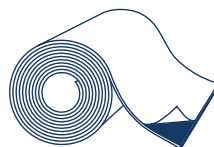
#### ThermaEco FRZ – standard sheet

Standard insulation sheet of cross-linked PE foam, in rolls



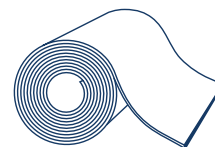
#### ThermaEco FRZ – SA sheet

Self-adhesive insulation sheet, for quick assembly, in rolls



#### ThermaEco FRZ – sheet with aluminum or EPDM coating

Insulation sheet with additional aluminum or EPDM coating, in rolls



# Technical Properties

Properties	Units SI	Values	Testing method
<b>Physical properties</b>			
Dimensional tolerances	-	Coherent	EN 14313
Density	kg/m <sup>3</sup>	18-36	-
Structure	-	Fine, closed-cells	-
Color	-	grey	-
<b>Thermal properties</b>			
Maximum service temperature	°C	+95 (tubes) +85 (sheets)	EN 14707
Thermal conductivity (λ)	W/m·K	0.040 at 40°C (ThermaEco FRZ – tubes) 0.042 at 40°C (ThermaEco ZZ)	EN ISO 8497
<b>Fire properties</b>			
SBI classification	-	E <sub>L</sub> F (sheets)	EN 13501-1
<b>Water resistance properties</b>			
Water absorption	kg/m <sup>2</sup>	0.05	EN 13472

Current authorizations, approvals, test results, technical test reports are available at [www.thermaflex.com](http://www.thermaflex.com)



### ThermaEco FRZ - tubes

Standard tubes made of high quality PE foam with longitudinal notch; in gray

Pipe diameter					Wall thickness C = 6 mm					Wall thickness E = 9 mm				
Cu			Fe		Product code	Description	Price/rm	Rm/cart.	Availability	Product code	Description	Price/rm	Rm/cart.	Availability
DN	outer (mm)	inch	DN	outer (mm)										
10	12,0	1/8	6	10,2						3026-009012-020	E-12*		360	C
10	15,0	1/4	8	13,5	3026-006015-020	C-15		440	A	3026-009015-020	E-15		348	A
15	18,0	3/8	10	17,2	3026-006018-020	C-18		360	A	3026-009018-020	E-18		288	A
20	22,0	1/2	15	21,3	3026-006022-020	C-22		300	A	3026-009022-020	E-22		248	A
25	28,0	3/4	20	26,9	3026-006028-020	C-28		220	A	3026-009028-020	E-28		188	A
32	35,0	1	25	33,7	3026-006035-020	C-35		160	A	3026-009035-020	E-35		140	A
40	42,0	1 1/4	32	42,4						3026-009042-020	E-42		110	A
	48,0	1 1/2	40	48,3						3026-009048-020	E-48		84	A
50	54,0			54,0						3026-009054-020	E-54		76	A
50	57,0			57,0						3026-009057-020	E-57		76	B
		2	50	60,0						3026-009060-020	E-60		70	A
	64,0			63,5						3026-009063-020	E-63		68	A
	70,0	2 1/4		70,0										
65	76,1	2 1/2	65	76,1						3026-009076-020	E-76		46	A

\* Minimum order 16 cartons

Pipe diameter					Wall thickness J = 13 mm					Wall thickness N = 20 mm				
Cu			Fe		Product code	Description	Price/rm	Rm/cart.	Availability	Product code	Description	Price/rm	Rm/cart.	Availability
DN	outer (mm)	inch	DN	outer (mm)										
10	12,0	1/8	6	10,2	3026-013012-020	J-12*		240	C					
10	15,0	1/4	8	13,5	3026-013015-020	J-15		240	B	3026-020015-020	N-15		130	A
15	18,0	3/8	10	17,2	3026-013018-020	J-18		200	A	3026-020018-020	N-18		118	A
20	22,0	1/2	15	21,3	3026-013022-020	J-22		172	A	3026-020022-020	N-22		100	A
25	28,0	3/4	20	26,9	3026-013028-020	J-28		134	A	3026-020028-020	N-28		90	A
32	35,0	1	25	33,7	3026-013035-020	J-35		108	A	3026-020035-020	N-35		66	A
40	42,0	1 1/4	32	42,4	3026-013042-020	J-42		90	A	3026-020042-020	N-42		62	A
	48,0	1 1/2	40	48,3	3026-013048-020	J-48		70	A	3026-020048-020	N-48		48	A
50	54,0			54,0	3026-013054-020	J-54		64	A	3026-020054-020	N-54		46	A
50	57,0			57,0	3026-013057-020	J-57		58	C	3026-020057-020	N-57		40	B
		2	50	60,0	3026-013060-020	J-60		58	A	3026-020060-020	N-60		40	A
	64,0			63,5	3026-013063-020	J-63		52	A	3026-020063-020	N-63		40	A
	70,0	2 1/4		70,0	3026-013070-020	J-70		44	C	3026-020070-020	N-70		34	B
65	76,1	2 1/2	65	76,1	3026-013076-020	J-76		40	A	3026-020076-020	N-76		28	A
80	88,9	3	80	88,9	3026-013089-020	J-89		32	A	3026-020089-020	N-89		24	A
		3 1/2		101,6	3026-013102-020	J-102		26	B	3026-020102-020	N-102		20	C
100	108,0	3 3/4	100	108,0	3026-013108-020	J-108		24	A	3026-020108-020	N-108		18	A
100	114,0	4	100	114,3	3026-013114-020	J-114		22	A	3026-020114-020	N-114		18	A

\* Minimum order 16 cartons

Packed into 40 x 60 x 205 cm cartons

Definition of availability - see page 4





## ThermaEco FRZ - tubes

Standard tubes made of high-quality PE foam with longitudinal notch; in gray

Pipe diameter					Wall thickness P = 25 mm					Wall thickness S = 30 mm				
Cu			Fe		Product code	Description	Price/rm	Rm/cart.	Availability	Product code	Description	Price/rm	Rm/cart.	Availability
DN	outer (mm)	inch	DN	outer (mm)										
10	15,0	1/4	8	13,5	3026-027015-020	P-15		90	C					
15	18,0	3/8	10	17,2	3026-025018-020	P-18		90	B					
20	22,0	1/2	15	21,3	3026-025022-020	P-22		72	B	3026-030022-020	S-22		60	B
25	28,0	3/4	20	26,9	3026-025028-020	P-28		66	A	3026-030028-020	S-28		58	A
32	35,0	1	25	33,7	3026-025035-020	P-35		54	A	3026-030035-020	S-35		46	A
40	42,0	1 1/4	32	42,4	3026-025042-020	P-42		46	A	3026-030042-020	S-42		40	A
	48,0	1 1/2	40	48,3	3026-025048-020	P-48		42	B	3026-030048-020	S-48		34	A
50	54,0			54,0	3026-025054-020	P-54		38	A	3026-030054-020	S-54		28	A
50	57,0			57,0	3026-025057-020	P-57		36	C					
		2	50	60,0	3026-025060-020	P-60		34	A	3026-030060-020	S-60		26	A
	64,0			63,5	3026-025063-020	P-63		32	B	3026-030063-020	S-63		24	A
	70,0	2 1/4		70,0	3026-025070-020	P-70		28	C					
65	76,1	2 1/2	65	76,1	3026-025076-020	P-76		26	B	3026-030076-020	S-76		20	A
80	88,9	3	80	88,9	3026-025089-020	P-89		20	B	3026-030089-020	S-89		18	A
		3 1/2		101,6	3026-025102-020	P-102		18	C					
100	108,0	3 3/4	100	108,0	3026-025108-020	P-108		16	B					
100	114,0	4	100	114,3	3026-025114-020	P-114		14	B	3026-030114-020	S-114		10	A

Packed into 40 x 60 x 205 cm cartons

## ThermaEco FRZ - sheets

Thermal insulation sheet made of PE foam, gray, roll width: 100cm



ThermaEco FRZ™ – standard sheets				
Product code	Thickness	Price/m <sup>2</sup>	m <sup>2</sup> /roll	Availability
3299-005100-000	5 mm	<b>6,30</b>	200	A
3299-010100-000	10 mm		70	A
3299-013100-000	13 mm		60	A
3299-020100-000	20 mm		35	A
3299-025100-000	25 mm		30	A
3299-030100-000	30 mm		25	A



ThermaEco FRZ™ – self-adhesive sheet				
Product code	Thickness	Price/m <sup>2</sup>	m <sup>2</sup> /roll	Availability
3299-005100-100	5 mm SA		200	B
3299-010100-100	10 mm SA		70	B
3299-013100-100	13 mm SA		60	B
3299-020100-100	20 mm SA		35	B
3299-025100-100	25 mm SA		30	B
3299-030100-100	30 mm SA		25	B

FRZ sheet laminated with EPDM synthetic rubber coating, ensuring high resistance



ThermaEco FRZ™ – UV sheets				
Product code	Thickness	Price/m <sup>2</sup>	m <sup>2</sup> /roll	Availability
3299-010096-030	10 mm	<b>on request</b>	33,6	C
3299-013096-030	13 mm	<b>on request</b>	28,8	C
3299-020096-030	20 mm	<b>on request</b>	16,8	C
3299-025096-030	25 mm	<b>on request</b>	14,4	C

## ThermaEco - mounting accessories

Accessories						
Product	Product code	Product description	Minimum order	Pcs/pack.	Unit price	Availability
	3701-050015-000	Thermatape FR tape, 3mm x 50mm x 15m	piece	48		A
	3701-050045-300	Aluminum Tape, 0,1mm x 50mm x 45m	piece	24		A
	3701-048050-200	Duct Tape, grey, 48 mm x 50 m	piece	24		A
	3701-048009-200	Duct Tape, grey, 48 mm x 9 m	piece	54		A
	3709-100015-200	UV strap 100 mm x 15 m	piece	1		C
	3709-050015-200	UV strap 50 mm x 15 m	piece	1		C
	3700-000250-000	Thermaglue (0,25 L)	piece	24		A
	3700-001000-000	Thermaglue (1 L)	piece	12		A
	3700-020000-000	Thermaglue 20 L (16,8 kg)	piece	1		A
	3702-001000-110	White waterproof UV paint (1 L)	box	12		B
	3799-001000-000	Solvent (1 L)	box	12		B
	3801-000000-000	Glue pump	piece	1		A
	3801-000011-110	Glue brush 11 mm	piece	1		A
	3801-000017-120	Glue brush 17 mm	piece	1		A
	3703-000000-200	Thermaclips – assembly clips	box	250		A
	3800-000000-500	Metri box – inner width of the device: 12 cm	piece	1		A
	3800-000000-000	Tool set (steel, dies, meter, clips, template, glue, brush, knife, large knife, cap, installation instructions, DuctTape - grey, DuctTape - red)	piece	1		A
	3802-000250-100	Knife	piece	1		A

Definition of availability - see page 4

# ThermaCompact

Fully recyclable thermal tube insulation product made of direct extruded, closed-cell high quality polyethylene foam with strong protective polymer coating



## Benefits

- Consistent performance – strong protective polymer coating and robust insulation material
- Easy and quick assembly
- Easy cleaning due to smooth skin

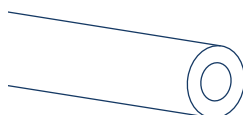
## Applications

- Domestic heating and plumbing – energy conservation in walls and floor spaces

### Types of products

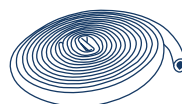
#### **ThermaCompact IS - tube**

Insulation tube made of high quality polyethylene foam laminated with PE foil in red and blue



#### **ThermaCompact IS10 - tube in coils**

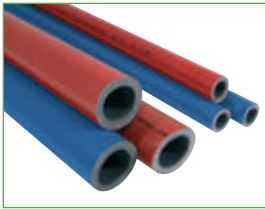
Insulation tube made of high quality polyethylene foam laminated with PE foil in red and blue. In rolls of 10 meters



# Technical Properties

Properties	Units SI	Values	Testing method
<b>Physical properties</b>			
Dimensional tolerances	-	Coherent	EN 14313
Density	kg/m <sup>3</sup>	18 - 40	-
Structure	-	Fine, closed-cells	-
Color	-	Foam: grey Skin: red/blue	-
<b>Thermal properties</b>			
Maximum service temperature	°C	+95	EN 14707
Thermal conductivity (λ)	W/m·K	0.040 at 40°C	EN 13787
<b>Fire properties</b>			
SBI classification	-	E <sub>L</sub>	EN 13501-1
<b>Water resistance properties</b>			
Water absorption	kg/m <sup>2</sup>	0.05	EN 13472

Current authorizations, approvals, test results, technical test reports are available at [www.thermaflex.com](http://www.thermaflex.com)



### ThermoCompact IS

Tubes laminated with PE foil in red and blue

Pipe diameter					Wall thickness C = 6 mm					Wall thickness C = 6 mm (blue)				
Cu			Fe		Product code	Description	Price/rm	Rm/cart.	Availability	Product code	Description	Price/rm	Rm/cart.	Availability
DN	outer (mm)	inch	DN	outer (mm)										
10	15,0	¼	8	13,5	3030-006015-400	C-15		240	A	3030-006015-401	C-15		240	B
15	18,0	⅜	10	17,2	3030-006018-400	C-18		200	A	3030-006018-401	C-18		200	A
20	22,0	½	15	21,3	3030-006022-400	C-22		160	A	3030-006022-401	C-22		160	A
25	28,0	¾	20	26,9	3030-006028-400	C-28		108	A	3030-006028-401	C-28		108	A
32	35,0	1	25	33,7	3030-006035-400	C-35		88	A	3030-006035-401	C-35		88	B

Pipe diameter					Wall thickness E = 9 mm					Wall thickness E = 9 mm (blue)				
Cu			Fe		Product code	Description	Price/rm	Rm/cart.	Availability	Product code	Description	Price/rm	Rm/cart.	Availability
DN	outer (mm)	inch	DN	outer (mm)										
10	15,0	¼	8	13,5	3030-009015-400	E-15		148	A	3030-009015-401	E-15		148	B
15	18,0	⅜	10	17,2	3030-009018-400	E-18		128	A	3030-009018-401	E-18		128	A
20	22,0	½	15	21,3	3030-009022-400	E-22		112	A	3030-009022-401	E-22		112	A
25	28,0	¾	20	26,9	3030-009028-400	E-28		88	A	3030-009028-401	E-28		88	A
32	35,0	1	25	33,7	3030-009035-400	E-35		70	A	3030-009035-401	E-35		70	B
40	42,0	1 ¼	32	42,4	3030-009042-400	E-42		52	A	3030-009042-401	E-42		52	B

Pipe diameter					Wall thickness J = 13 mm					Wall thickness N = 20 mm				
Cu			Fe		Product code	Description	Price/rm	Rm/cart.	Availability	Product code	Description	Price/rm	Rm/cart.	Availability
DN	outer (mm)	inch	DN	outer (mm)										
10	15,0	¼	8	13,5	3030-013015-400	J-15		108	C					
15	18,0	⅜	10	17,2	3030-013018-400	J-18		100	A	3030-020018-400	N-18		54	A
20	22,0	½	15	21,3	3030-013022-400	J-22		88	A	3030-020022-400	N-22		52	B
25	28,0	¾	20	26,9	3030-013028-400	J-28		64	A	3030-020028-400	N-28		40	B
32	35,0	1	25	33,7	3030-013035-400	J-35		50	B	3030-020035-400	N-35		38	B
40	42,0	1 ¼	32	42,4	3030-013042-400	J-42		42	B	3030-020042-400	N-42		30	B

Pipe diameter					Wall thickness P = 25 mm				
Cu			Fe		Product code	Description	Price/rm	Rm/cart.	Availability
DN	outer (mm)	inch	DN	outer (mm)					
10	15,0	¼	8	13,5	3030-025015-400	P-15		40	C
15	18,0	⅜	10	17,2	3030-025018-400	P-18		40	B
20	22,0	½	15	21,3	3030-025022-400	P-22		36	B
25	28,0	¾	20	26,9	3030-025028-400	P-28		30	B
32	35,0	1	25	33,7	3030-025035-400	P-35		24	C
40	42,0	1 ¼	32	42,4	3030-025042-400	P-42		24	C

Packed into 30 x 40 x 205 cm cartons

Definition of availability - see page 4

## ThermaCompact IS10

Tubes laminated with PE foil in red or blue (in coils of 10 meters)



Packed into 40 x 60 x 105 cm cartons

Pipe diameter					Wall thickness C = 6 mm (red)					Wall thickness C = 6 mm (blue)				
Cu		Fe			Product code	Description	Price/rm	Rm/cart.	Availability	Product code	Description	Price/rm	Rm/cart.	Availability
DN	outer (mm)	inch	DN	outer (mm)										
10	15,0	¼	8	13,5	3130-006015-200	C-15		370	A	3130-006015-201	C-15		370	A
15	18,0	¾	10	17,2	3130-006018-200	C-18		330	A	3130-006018-201	C-18		330	A
20	22,0	½	15	21,3	3130-006022-200	C-22		280	A	3130-006022-201	C-22		280	A
25	28,0	¾	20	26,9	3130-006028-200	C-28		250	A	3130-006028-201	C-28		250	A
32	35,0	1	25	33,7	3130-006035-200	C-35		190	A	3130-006035-201	C-35		190	A

## ThermaCompact - mounting accessories

Accessories						
Product	Product code	Product description	Minimum order	Pcs/pack.	Unit price	Availability
	3701-048050-210	Duct Tape, red, 48 mm x 50 m	piece	24		A
	3700-000250-000	Thermaglu (0,25 L)	piece	24		A
	3700-001000-000	Thermaglu (1 L)	piece	12		A
	3700-020000-000	Thermaglu 20 L (16,8 kg)	piece	1		A
	3799-001000-000	Solvent (1 L)	box	12		B
	3801-000000-000	Glue pump	piece	1		A
	3801-000011-110	Glue brush 11 mm	piece	1		A
	3801-000017-120	Glue brush 17 mm	piece	1		A
	3800-000000-500	Metri box - inner diameter - 12 cm	piece	1		A
	3800-000000-000	Tool set (steel, dies, meter, clips, template, glue, brush, small knife, large knife, cap, installation instructions, DuctTape – grey, DuctTape – red)	piece	1		A
	3802-000250-100	Knife	piece	1		A

Definition of availability - see page 4